

BOURNE CONSERVATION TRUST



WILDFLOWERS The Pollinator Project (See page 3)

WINTER 2023-24

Number 55

President's Letter	2	Events	8
The Pollinator Project	3	Ways to Give	10
News & Notes	4	Kahlin's Korner	11
Out on the Trails	6		

A Note from the President

The Bourne Conservation Trust has come a long way since it was founded in 1980! As of this year the BCT, through the generosity of our membership, has conserved 77 parcels of land in Bourne, totaling more than 300 acres. We also hold conservation restrictions on approximately 40 acres. Over the years, the BCT has raised more than 17 million dollars to fund the purchase of the land we have chosen to protect.

To ensure our future well-being, now is an opportune time to build on our endowment, and so again, we ask for your support. At present there are no outstanding debts; we have paid for the last of the properties purchased, and our new office at Spring Hill Farm has been completed. Our annual operating expenses are ever present and average about \$75,000, covering property enhancement and maintenance, office supplies, property insurance, etc. Over the next couple of years, it is my hope to raise an additional 2 million dollars to be invested in the endowment. The interest earned would help fund our operating expenses and provide a cushion toward any future land purchase. Please consider a gift to our endowment fund, either through a contribution now or a bequest to be realized at a future date. The sustainability and health of the BCT is not guaranteed and should be very important to all who are enjoying the fruits of investment in our communities over so many years.

And, speaking of sustainability, equally important is the need to think about the next generation of Trustees to oversee the operation of the BCT in the decades to come. Leadership succession is vital to our effective longevity and well-being. If you are interested in making a serious commitment to this organization to ensure its future success or if you know a capable person who you would like to recommend, please contact any of the Trustees, email (info@bourneconservationtrust.org), call (508-563-2884), or stop by the office (1079 County Road, Cataumet, MA). We look forward to hearing from you.

On behalf of the Trustees, thank you for your ongoing support and all the best for 2024.



Steve Ballentine

A PROFUSION OF WILDFLOWERS: The Pollinator Project

By Gordon Schimmel

As announced last spring in the Trust's Donor Book, the BCT is now actively engaged in promoting wildflower meadows for pollinators on some of our properties. If you have recently passed by the corners of Foster Howard and Long Hill Roads, County and Scraggy Neck Extension Roads or visited our newly acquired Baxendale Woods property, you may have noticed a profusion of wildflowers that do more than simply beautify the land; they provide habitat for an abundance

that humans rely upon for sustenance. For example, according to a recent Massachusetts Division of Fisheries and Wildlife report, there are



suppression, deer browsing, off-road vehicles, and pesticides as the major threats facing pollinators. While pollinator populations may be able to overcome a single one of these stressors, when a suite of these pressures overlap, evolve and interact with one another, they can place an intense pressure on pollinators."

Wherever possible, the BCT initiative to expand wildflower gardens and meadows on our properties is intended to overcome this loss of habitat.



of pollinators that are essential to our ecosystem.

Pollinators fertilize plants that eventually produce seeds and fruits, and they include bees, butterflies, moths, beetles, flies and birds, even ants! These small creatures are absolutely essential to the ecosystems

approximately 380 species of bees that pollinate nearly half of the food crops grown here. Sadly, our beekeepers report that we have already lost more than half of the honeybee colonies, putting Massachusetts in the top 10% of states with the highest level of loss. "...habitat loss, fire

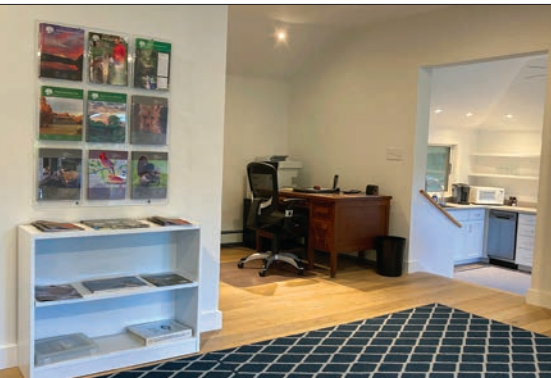
All it takes is *all of us* to become informed and take action to support the smallest animals that we sometimes take for granted, creatures that are absolutely essential to continue life as we know it on this fragile planet. Please join us as we rejoice in creating natural beauty with a purpose.

NEWS & NOTES

New Headquarters in Cataumet!

The BCT has officially moved to Spring Hill Farm. The house has been renovated and includes an office, meeting room, kitchen/eating area and bathroom.

The goats, horses and birds make for some very entertaining views, as they always are alert to all comings and goings at the farm.



BCT Newsletters are available, plus literature from other conservation groups, as well as some old photos of the area.

The house was home to Joan Mayhew. She donated the whole property to the BCT in 2006. As you can see, dogs are welcome.



Report from Spring Hill Farm, a BCT Treasure

*Some Sad and Some Glad News
about our Favorite Friends*

First we have some sad news to pass along. Our beloved goat Buttercup passed away peacefully in October at 14 years of age. Buttercup came to us in 2016 along with her mom, Mrs. M and her brother Ollie. They



Buttercup

were Nigerian Dwarf goats, known to be gentle, friendly and easily trainable. And Buttercup certainly proved that. Everyone who visited Buttercup loved her and she loved them. (Buttercup was predeceased by her mom and Ollie, and later joined by Ruff and Tuff, two Nigerian Dwarf goats born in 2018 at Coonamessett Farm in Hatchville.)

Without Buttercup, Ruff and Tuff, "our boys," seemed a little lonely and at loose ends. To fix that, we recently welcomed Daisy Mae and Gracie Rose, now "our girls," both 4-year old Nigerian Dwarf goats also born at Coonamessett Farm.



Above, our new four-year old goats, Gracie on the left and Daisy on the right.

Could they all have the same father, maybe. Are our boys happier, to be sure!

As for George and Luke, our privately-owned horses, they have settled in nicely on the farm and are a handsome sight to see grazing.



Visitors spend some time with Ruff and Tuff, before the arrival of their new farm mates.

The Volunteers

Besides those who care for our goats and sometimes the horses, we want to thank each and every one of you who volunteered your time at the farm this past year: raking and brush trimming in the fall, tending gardens and planting in the spring and summer, and cleaning the barn and farm house. Can't imagine where we would be without your help.

Help Wanted

The Trust is always looking for more help. You may volunteer at Spring Hill Farm or join the Trail Meisters out on the trails. There are also needs for help at the office. Please pitch in any way you can. If you are interested in volunteering, contact the BCT at 508-563-2884 or bct.trails@gmail.com.

OUT ON THE TRAILS

Report from the Trail Meisters

Dick Murphy

Your BCT Trail Meisters have been hard at work on all our trails throughout the year and have seen some notable changes. One of our

biggest projects was the replacement of the aging bridge approaching Lawrence Island, which was taken away by time and tide. Our first challenge was to design a new bridge. Then we had to come up with a plan to coordinate the logistics to build it, as tides

allowed us only a 5-hour window to get the building materials to the site, assemble and anchor the bridge in place. The team rose to the challenge and the new bridge looks great.

We continue to refine the trails at Baxendale Woods. The entrance has been reseeded with grass and beautiful wildflowers and with a defined walking trail. As you walk in, over to the right a bridge over the flowing stream that leads to Squeteague Harbor has been added, as have two sitting benches so



The Trailmeisters who came out on a "wicked hot" day, to build a bridge to Lawrence Island over the marsh. L to R: Matt Stone, Dick Murphy, Frank Guerra, George Gillis, Neil McPhee, Mike Lipchak, sitting are: Paul Rossi and Peter Fisher.



New BCT sign at Pocasset Park on Barlows Landing Road.

allowed us only a 5-hour window to get the building materials to the site, assemble and anchor the bridge in place. The team rose to the challenge and the new bridge looks great.



In Memoriam: Richard (Dick) Boyden

It is with deep sadness that we inform you of the passing of Dick Boyden early this November, at 90 years of age. To the BCT, Dick was a friend, mentor, leader, dedicated worker, and all round a great and talented guy. He was a BCT Trustee for 21 years, from 2001 to 2022. And he was the creator and guiding force behind the BCT Trail Meisters, even coined their name. For many years he designed and helped maintain trails on almost all BCT properties, while also cutting trees, building bridges and benches, and offering many volunteers his guidance and friendship. If you had the honor of working with Dick, you understand what an asset he was to his beloved BCT. Showing his dedication to preserving "woods, wildlife, waters and winds," Dick also volunteered for the Orenda Wildlife Land Trust out of Barnstable as a board member and member of the Land Stewardship Committee. Dick will be sorely missed by all.



Neil McPhee cut felled a tree at Baxendale Woods, while Peter Fisher observed.

walkers can take a break and enjoy the beautiful sights of nature. At our newly acquired property on Red Brook Harbor Road, the Trail Meisters cleared the wooded area of dead trees and branches, debris and poison ivy, then planted 13 flowering trees which will be



Many thanks to all Trail Meisters and all walkers who support their efforts by picking up trash, twigs and branches, doing side trimming and reporting fallen branches or tree blow downs via email or telephone to the BCT headquarters.

New to Town or the Trails?

Why not review (and print) the BCT trail maps, available online at www.bourneconservationtrust.org. Copies are available at Ballentine's

Boat Shop, Parker's Boat Yard, Kingman Marine, Bourne Public Library and Bourne Town Hall. Then make a pledge to walk along as many trails as you can.

Important Reminders

With the number of people and pets out on our trails it is more important than ever to:

- ◆ Make sure your dog is under control at all times.
- ◆ If walking the trail around Lawrence Island, leash your dog until you reach the bridge, and then from the bridge back to your car.
- ◆ Keep your dog off private property.
- ◆ Pick up the poop from the trails, from around cranberry bogs, and especially from the shores (dog feces is a huge pollutant of our harbors); be sure to take it with you for proper disposal. Please do not bag it and leave it.
- ◆ Park appropriately and do not back onto private property to turn around.

Please be considerate of other walkers and respectful of BCT properties and private properties abutting our lands.



Paul Rossi and Ben Allen tackled a few fallen trees in the Catuamet Greenway.

enjoyed throughout the seasons. We are in the process of replacing all the signs at Little Bay to make the trail system easier to understand and we added a trail map at each of the parking lots. We have replaced all the signage at Nickerson Conservation Area and started the process of widening that trail system. As always, we are constantly cleaning up fallen trees and branches in all walking areas to make the trails as safe as possible.

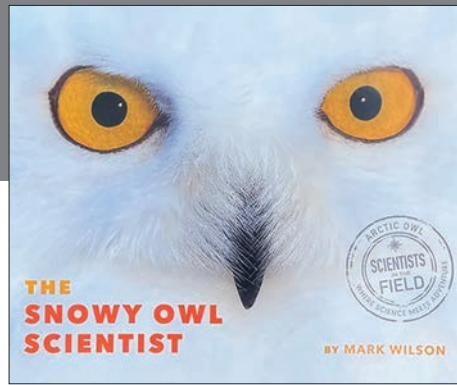


Bench at Bourne Sisters, made by Paul Rossi.

EVENTS

The Easter Bunny Came to Town

And to celebrate, children of all ages came to Spring Hill Farm on April 2 for an Easter Egg Hunt. It was a picture-perfect sunny day for children of all ages to search for more than 300 eggs hidden by the bunny's helpers. The hunt was organized by the Cataumet Civic Associates, along with help from the BCT and the Cataumet Methodist Church, a true community effort and a big and happy success. Plans are already underway for next year's Easter visit and hunt, to feature even more eggs plus a special golden one. The date will be announced early next year.



Eyes on Owls: Whoos's Watching You?

The BCT hosted a special event last May at the Farm, called Eyes on Owls. This special program gave attendees the opportunity to see and learn about owls in New England, and how to attract and protect them. Live owls were the stars of the show, from the tiniest Northern Saw-Whet Owl, to the Screech, Barred, Barn, Great Horned and the largest, Snowy owl. Mark and



Marcia Wilson, the presenter, gave us a "hooting" lesson and then taught us about owls' diets, behavior and how hopefully one day to see one. We had a perfect nice spring day for this event, which was enjoyed by all ages.



This page, top left: Logo for The Snowy Owl Scientist; right: Part of the crowd nestled behind the barn at Spring Hill Farm. Bottom left: visitors are rapt with interest and awe as Marcia Wilson (right) talks about the snowy owl. More than 100 people attended the two sessions in May.



The Butterfly Project

This project, announced last spring, is moving forward as part of the wildflower meadow initiative. Over time we hope to plant milkweed plants in areas where they will thrive, to help attract Monarch butterflies. See A Profusion of Wildflowers, Page 3.

Did you notice?



The BCT's Spring Hill Farm sign is graced with a whimsical bird by local artist Alfie Glover. The sculpture

came from the fundraising "thermometer" created by Glover with Grace Rowe for the Baxendale project.

The Christmas Tree Project

In 2022, as a result of that summer's draught, the Dimmick family replaced the annual Christmas tree sale with a Christmas tree planting. About 12 people gathered this spring and planted 90 saplings, which should be ready for the annual tree sale around 20???. With this year's rain, the family was able to hold a Christmas tree sale in early-December and once again, all the proceeds were donated to the BCT. Thank you Dimmick family for your loyal and ongoing support!



Top: Dorata and Lisa Bzymek with Greyson
Middle: The Pontbriands
At Left: John Woodley planting Christmas trees at Dimmick's.

WAYS OF GIVING

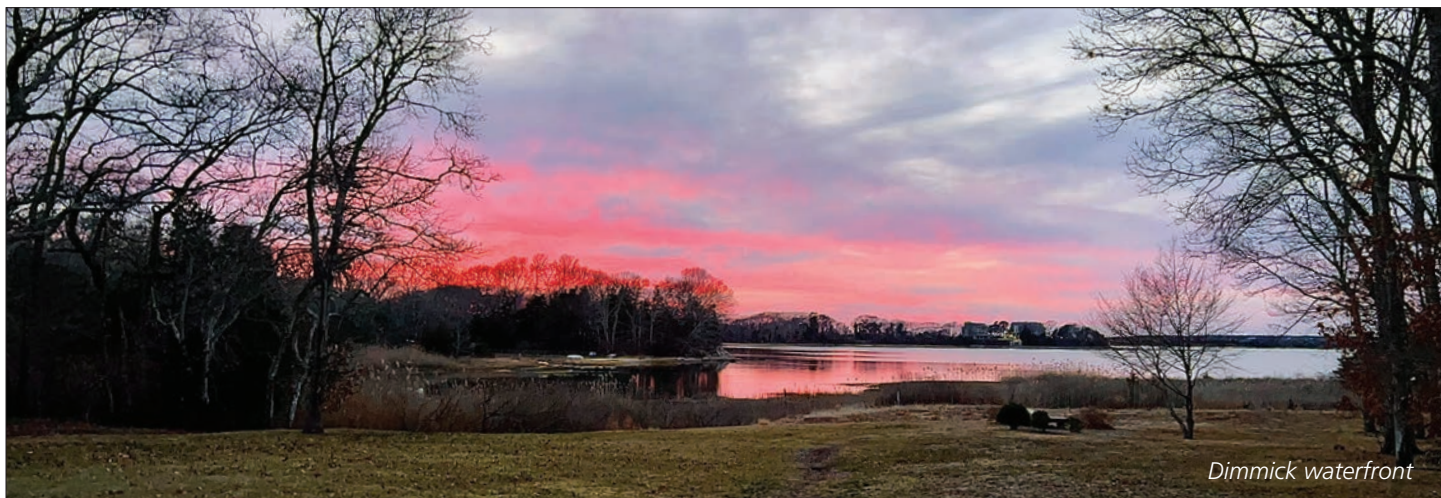
In addition to cash donations, there are many ways of giving to the BCT:

- ◆ Name the BCT in your will or as beneficiary of a life insurance policy.
- ◆ Give appreciated securities.
- ◆ Contact your bank or financial institution to automatically send a monthly donation to the BCT from a checking or savings account.
- ◆ Give the gift of real estate (or sell it to the BCT for less than its fair market value; the difference is considered a charitable gift). Note: A gift of land is a win-win for donors, the BCT and residents of Bourne. Such gifts provide tax advantages and help preserve the scenic character of our area, maintain air quality and provide a natural habitat for local wildlife.
- ◆ Offer a matching gift to support our efforts to purchase property. People respond generously when they know their gift will be doubled.

Contact the BCT office at 508-563-2884 or log on to www.bourneconservationtrust.org for more information or for answers to your questions.

Note: The BCT does not currently accept credit cards but there are links to donate online on our website www.bourneconservationtrust.org/giving.

The Bourne Conservation Trust is tax exempt from federal income tax under section 501(c)(3) of the Internal Revenue Code. Within IRS guidelines, contributions and gifts may be tax deductible from your taxable income. The Trust's tax identification number (TIN) is 04-2767827. Please consult your tax advisor for more information.



Board of Directors

Stephen Ballentine, President
Grace Rowe, Treasurer
Eugenie Birch, Trustee
Tom Corcoran, Trustee
Philip DeNormandie, Trustee
Dick Murphy, Trustee
Matthew Stone, Trustee



The BCT is a private nonprofit land trust with a primary objective of acquiring land and leaving it in its natural state to: protect habitats, provide groundwater recharge, preserve rural ambiance and make it available for recreational and educational purposes. The BCT owns and maintains more than 300 acres of open space. Miles of walking trails thread their way through these protected woods and waterfront areas. The BCT is always looking for volunteers and donors to help achieve its mission and both maintain and enhance its properties. Learn more at www.bourneconservationtrust.org.

Booklet design: Susan Quirk, s.quirk@comcast.net

Kahlin's Korner

Kahlin's Korner is dedicated to the memory of Kahlin Jespersen, a child full of sunshine and a love of nature, and also to all children for whom we preserve a part of the natural world. Kahlin loved to draw. How about your kids?

Raccoon



Mouse



Squirrel



Winter Footprints

Skunk



Opossum



Rabbit



Fox



The Old Farmer's Almanac predicts "above normal" snowfall for this winter. With that in mind, keep your eye out for animal tracks. Look for them in the snow, take pictures—or make a drawing—and send them to us. We'll print as many as we can next year. If there's no snow, mud, soil or sand will do. Email copies of original files to bct.trails@gmail.com or mail to BCT, Box 203, Cataumet, MA 02534.

Crow



Deer



Coyote



Trailmeister



PO Box 203
Cataumet, MA
02534

Non Profit Organization
U.S. Postage
PAID
Permit No. 4
Cataumet, MA 02534

Address Service
Requested



Contact Information:

508-563-2884

www.bourneconservationtrust.org

info@bourneconservationtrust.org

bct.trails@gmail.com

*Decked out for the holidays, the Cataumet Depot, owned by the BCT,
is maintained and managed by Cataumet Civic Associates.*